

Important Traffic Management (TM) Information

Following the postponement of the proposed A429 night-time closures due to freezing weather, it has been agreed we shall re-commence this closure and associated works as below.

Traffic Switch from Old to New Road

Firstly, the plan on Page 2 shows how the TM will be from **Midday Monday 1st March** when we switch traffic from the Old Hullavington Road **onto the new section of road**. This had been planned until the weather forced us to postpone the night-time closures.

The 3-way lights will remain in operation. The 3rd traffic light head that is currently on the Old Hullavington Road will move across to our new road.

There will be some associated signage directing traffic to Dyson, Wellington Place and M4 Karting, businesses, and residents.

We shall be kerbing across the old road (**Hullavington Road**) junction to the A429 and excavating a section of it, closing it permanently.

A429 5 x Night-time Road Closures from Monday 1st March

We shall be closing the road from 8pm each night until 6am, when the road will then be re-opened.

This involves laying hundreds of tonnes of hot tarmac each night and is very dependent on dry weather with temperatures above 4 degrees Celsius ideally. Light rain is manageable but not prolonged heavy rain and cold or freezing conditions. Adverse weather conditions *may* cause a postponement or delay of some or all the planned work.

Remember, what limited **overnight traffic** there is during closure times to and from Wellington Place, Dyson and the M4 Karting business area **shall need to enter and leave from the Hullavington direction**.

Diversion route signage shall be in place in accordance with the approved diversion routes (see page 3 and 4).

The 3-way Temporary Traffic Lights at the new link road junction with the A429 will be reactivated each day after each night shift.

Following the completion of this night-time surfacing, and road markings, we will be able to take down the current 3-way lights set up and have the roundabout in operation.

All Maps are available on our [community website](#) for the scheme. Thank you for your cooperation and apologies for any inconvenience caused.



Want to get in touch?

Your Public Liaison Officer for the A429 Hullavington Link Road Scheme is Jim Aitken. He can be contacted by

T: 0330 041 4637*

E: A429@alungriffiths.co.uk

* Calls to this number are charged at national call rates and included in inclusive minute plans from landlines and mobiles

Calls are monitored out of normal work hours and a voicemail facility is available.

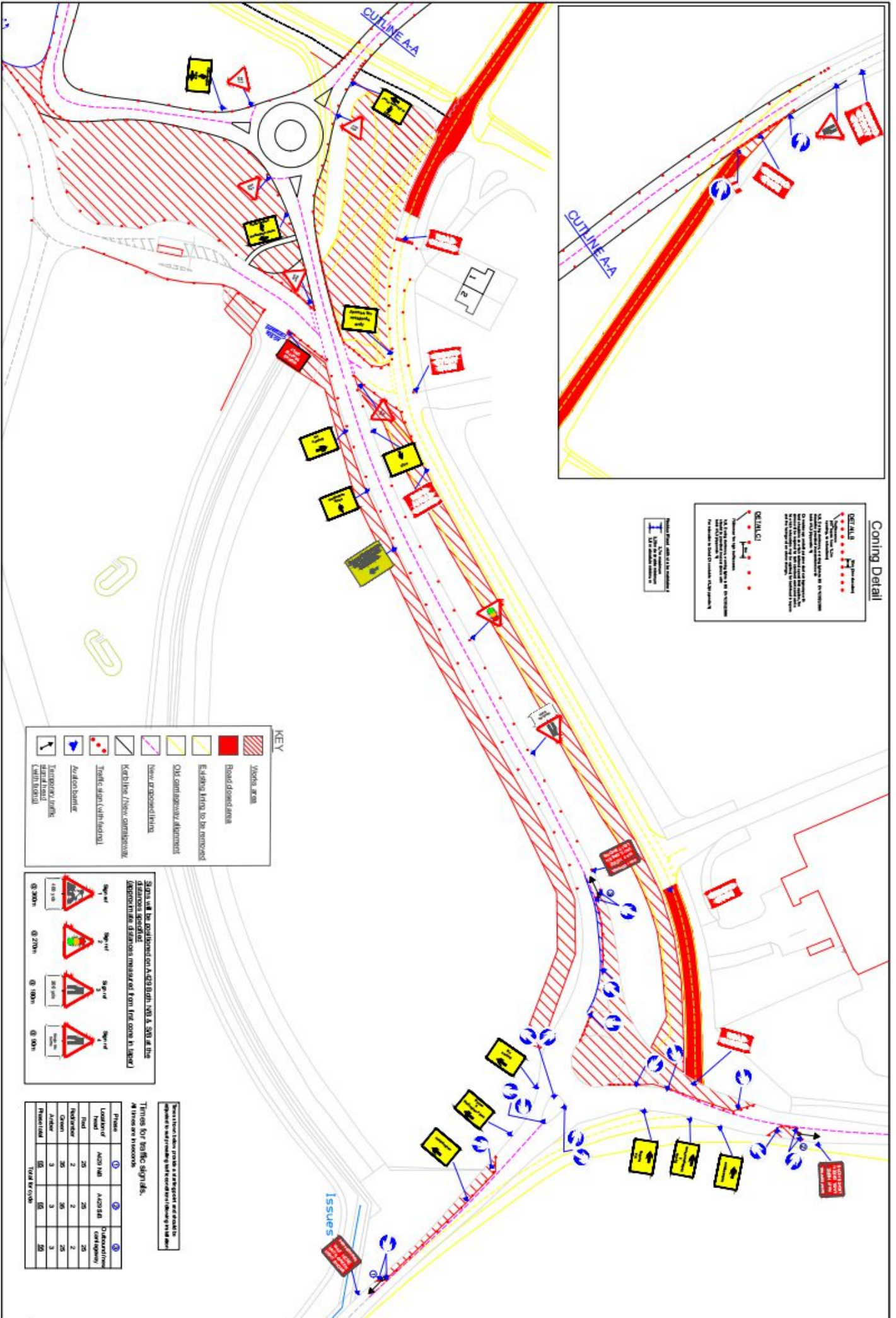
Please check out our project website which includes Frequently Asked Questions

community.alungriffiths.co.uk

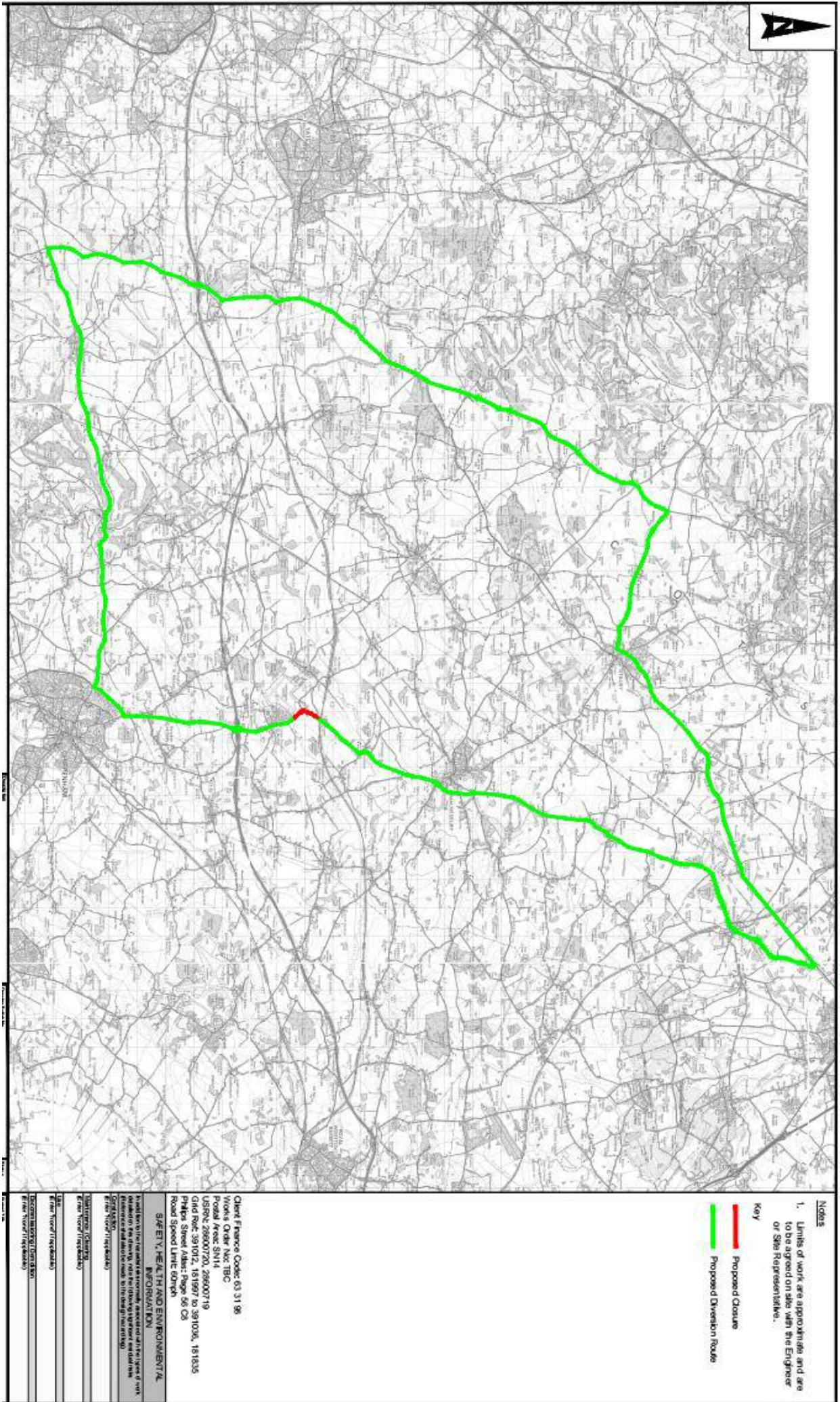
If you would like to subscribe to receive future Newsletters and Bulletins, please click [HERE](#) and complete the online form for Mail Chimp. OR use this QR code opposite.



SCAN ME



A429 5-night Road Closure 01/03/21 to 05/03/21 inclusive Light Veh Diversion Map



Notes

- Limits of work are approximate and are to be agreed on site with the Engineer or Site Representative.

Key

- Proposed Closure
- Proposed Diversion Route

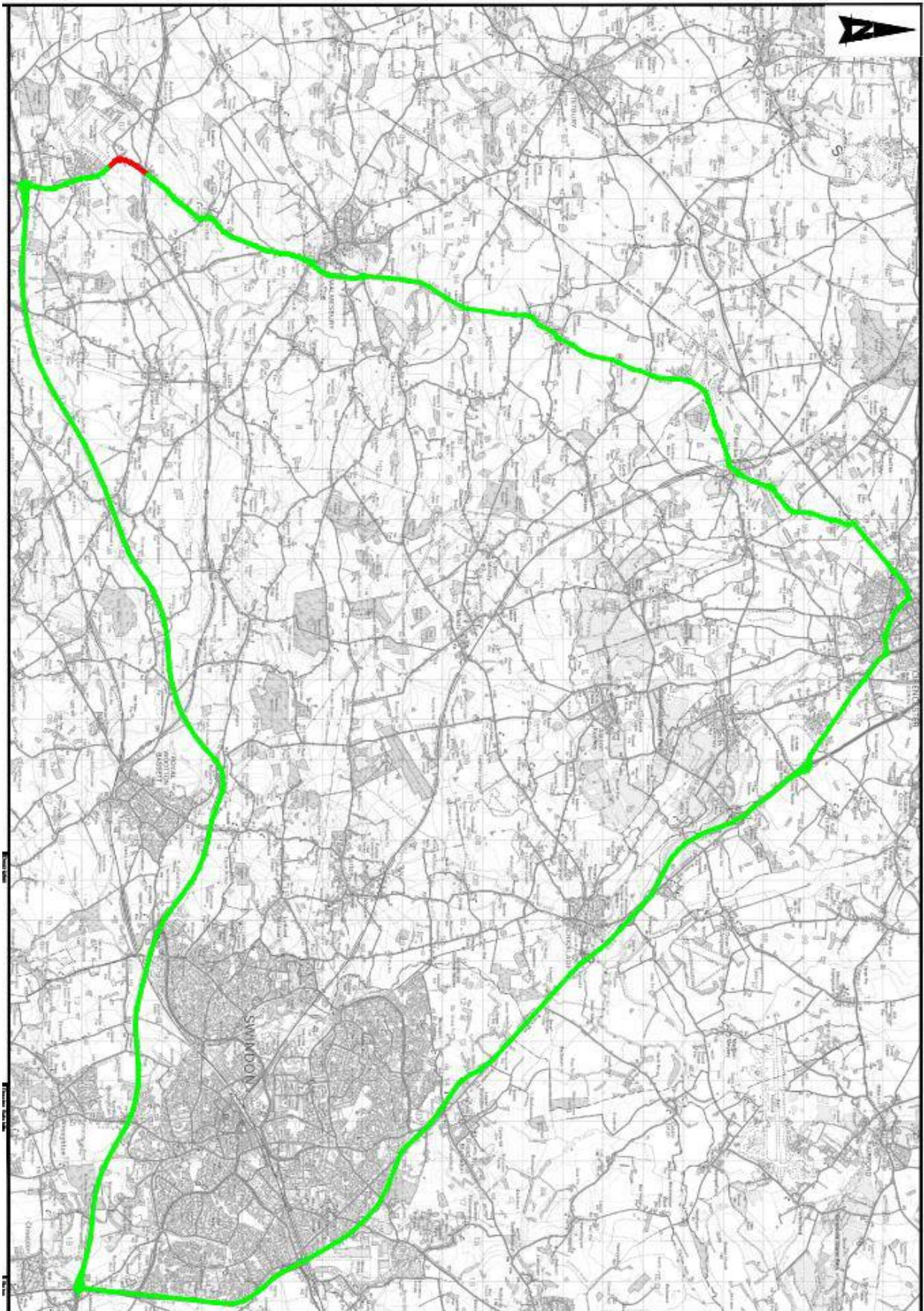
Client France Code: 03 31 98
 Work Order No: 780
 Postal Area: S1114
 USRN: 20600720, 20600719
 Grid Ref: 391012, 161597 to 391036, 161635
 Triples Street Maps page 98 C6
 Road Speed Limit 60mph

SAFETY, HEALTH AND ENVIRONMENTAL INFORMATION

It is the responsibility of the contractor to ensure that all the types of work planned are carried out in accordance with the relevant health and safety legislation and to ensure that all the types of work planned are carried out in accordance with the relevant health and safety legislation.

DESCRIPTION OF WORK	CONTROL MEASURES	RESOURCES	START DATE	END DATE
Highway Works	Highway Works	Highway Works		
Highway Works	Highway Works	Highway Works		
Highway Works	Highway Works	Highway Works		
Highway Works	Highway Works	Highway Works		
Highway Works	Highway Works	Highway Works		

A429 5-night Road Closure 01/03/21 to 05/03/21 inclusive HGV Diversion Map



Notes

1. Limits of work are approximate and are to be agreed on site with the Engineer or Site Representative.

Key

- Proposed Closure
- Proposed Diversion Route

Client: Finance Code: 03 31 98
 Agency Order Ref: TBC
 Project: A429
 I/S/No: 20000720_20000719
 Client Ref: 391012, 161897 to 391026, 161835
 Project Start Date: 16/06/20
 Road Speed Limit: 60mph

SAFETY, HEALTH AND ENVIRONMENTAL

Item	Drawn	Checked	Approved	Date
SAFETY, HEALTH AND ENVIRONMENTAL				
DESIGN				
CONSTRUCTION				
OPERATION				
CLOSURE				
RE-OPENING				
POST-CLOSURE				